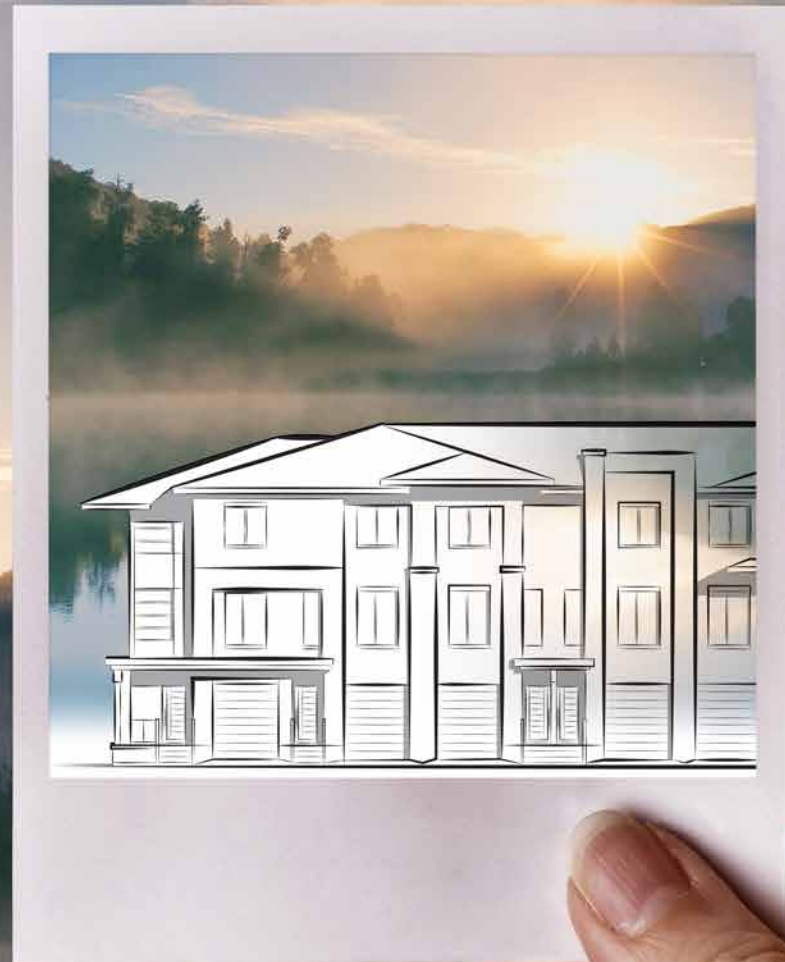




  
**waterstone**  
MODERN TOWNES

# IMAGINE A NEW WAY OF LIVING



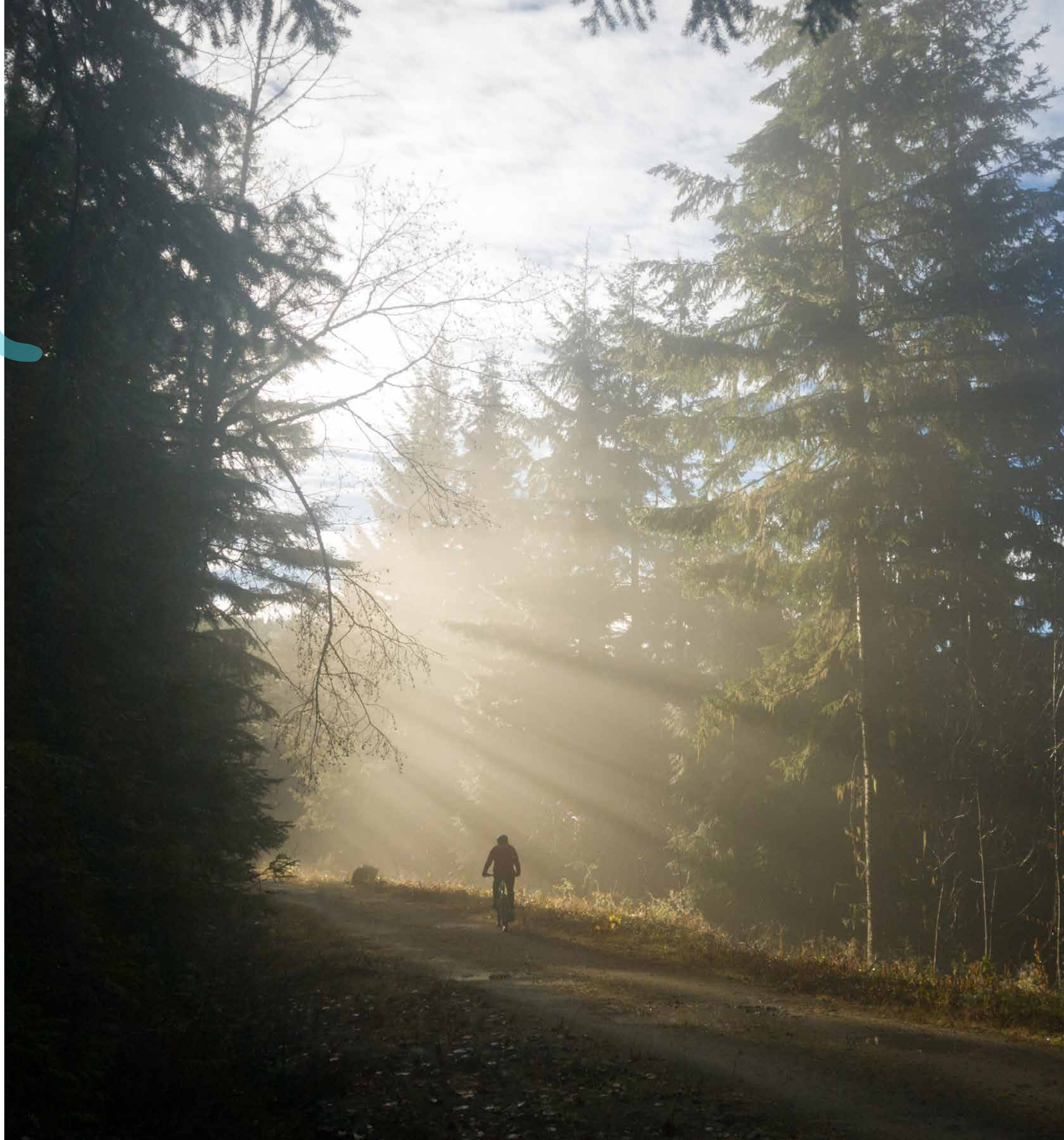
Do you hear it? The warm wind drifting in off Georgian Bay. The first rounds of the season teeing off on the fairway. Just behind you, the sun catches the top of the Blue Mountains. Dark green turns to gold. And nothing smells as quite as good as your first coffee of the day. Stop, look and listen. This is Waterstone, between the Lake and the Mountain. Refined living at home and adventure next door.

# WILD NATURE IS WAITING

At Waterstone, things are different by nature.

Here, where the mountain meets the water, your days are filled with golfing, skiing, swimming, antique hunting, boating, hiking; you can even take the bike trails from your door to the shops.

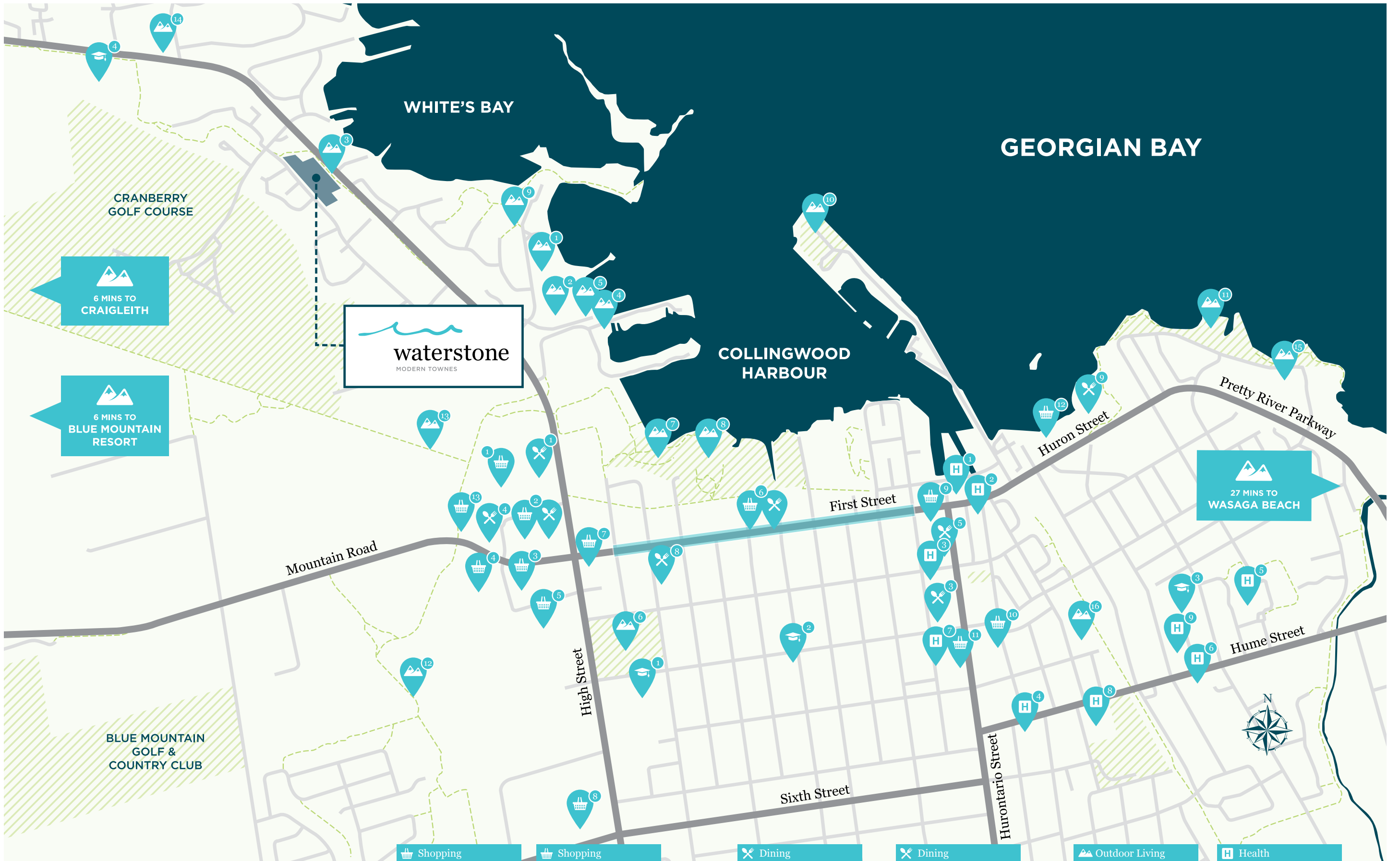
Just minutes from the pulse of Collingwood urban excitement, the heart of nature beats strong – and calls you home.





**AMENITY-RICH FOUR SEASON LIVING**





# MINUTES TO ANYTHING AND EVERYTHING

Map is not to scale. Artist's concept only. E. & O. E

## Shopping

1. Canadian Tire
2. Freshco
3. Mark's
4. Pet Value
5. Sports Check
6. Winners
7. **Blue Mountain Centre**
8. Galaxy Cinemas
9. Little Ed's Ski & Bike Shop
10. Staples
11. Metro
12. Metro Pharmacy
13. The Dollar Tree
14. Walmart Supercentre
15. The Home Depot
16. Fathom Boards

## Shopping

1. Kamikazi Bikes
2. Ski & Bikes
3. The Beer Store
4. M&M Food Market
5. Home Hardware
6. Loblaws
7. Loblaws Pharmacy
8. Giant Tiger
9. Sporting Life
10. Sobeys
11. Bed Bath & Beyond

## Dining

1. Montana's
2. **Blue Mountain Centre**
3. Crystal Buffet
4. Tesoro Restaurant
5. St. Louis Bar & Grill
6. Journeys Blend Café
7. Ashanti Coffee
8. Bentley's Sandwiches & Poutine
9. Beaver & Bulldog Sports Pub
10. Green Mango Tree Thai Fusion
11. Kelseys Original Roadhouse
12. Kitcho Sushi
13. Northwinds Brewhouse & Kitchen
14. San Diego Italian
15. The Hungry Sumo

## Dining

1. TheSmoke
2. Toppers Pizza
3. 98 Super Panda Chinese Restaurant
4. Duncans Café
5. Sushi Non
6. Swiss Chalet
7. The Iron Skillet

## Schools

1. Mountain View Elementary School
2. National Ski Academy
3. Connaught Public School
4. Pretty River Academy

## Outdoor Living

1. Law Cranberry Resort
2. Living Water Resort & Spa
3. Mountain Beach Resort
4. Southwinds Marine
5. Cranberry Yacht Club
6. Collingwood Skatepark
7. Harbourview Park
8. Collingwood Arboretum
9. White's Bay Park
10. Millennium Park
11. Sunset Point Beach
12. Georgian Meadows Trail
13. Georgian Trail
14. Rupert's Landing
15. Collingwood Park
16. Friendship Gardens

## Health

1. Collingwood Medical Centre Lab
2. The Shipyards Medical Arts Centre
3. Miller Goodman Dentistry
4. Collingwood Dental Centre
5. Collingwood General and Marine Hospital
6. Moran Medical Centre
7. Collingwood Dentistry
8. Collingwood YMCA
9. Collingwood After Hours Medical Clinic



# COME AND EXPLORE

Collingwood



# BETWEEN THE LAKE AND THE MOUNTAIN

Waterstone



Rendering is Artist's Concept and is an artistic interpretation of the design. It is not meant to be an exact rendition. E. & O. E.

Waterstone Townes

# THE NEW WAVE IN MODERN LIVING

Waterstone Townes will be recognized for its inspired blend of elegant sophistication and contemporary functionality. Designs with modern flair toned by the warmth of natural materials and traditional touches. A fusion of urban and country in stone, brick and wood textures. An extensive use of glass in striking vertical formations invite the great outdoors into the expansive interiors.



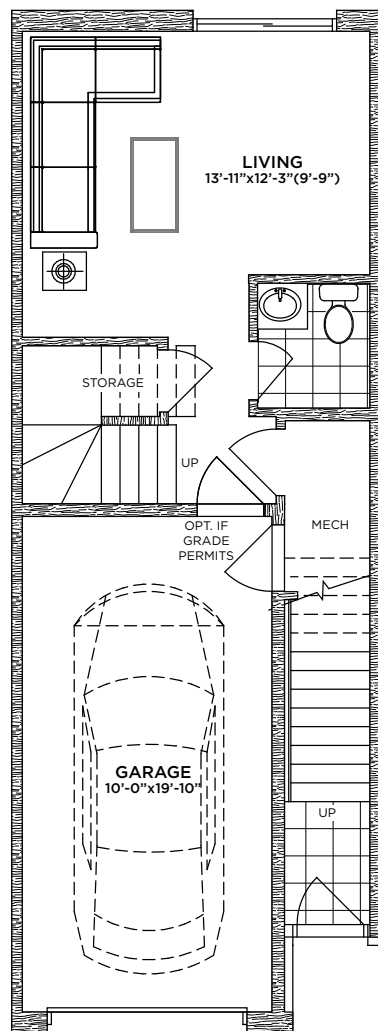
THE LOCATION YOU'VE BEEN WAITING FOR



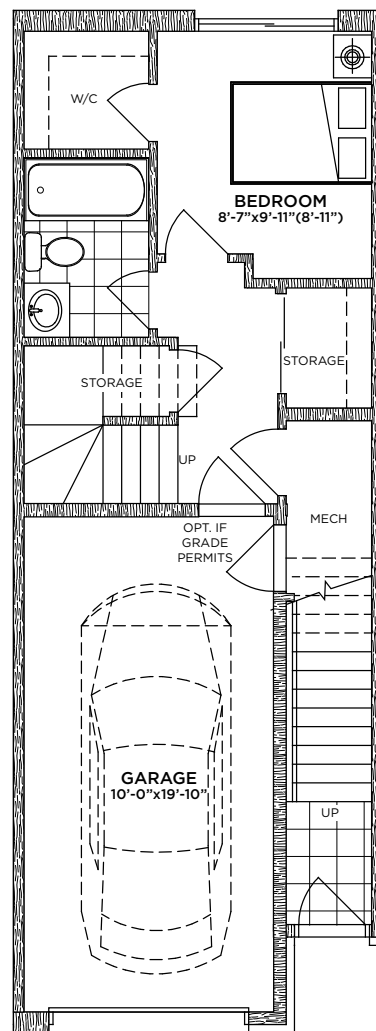
**URBAN STYLE,  
COUNTRY CASUAL**

# THE BIRCH

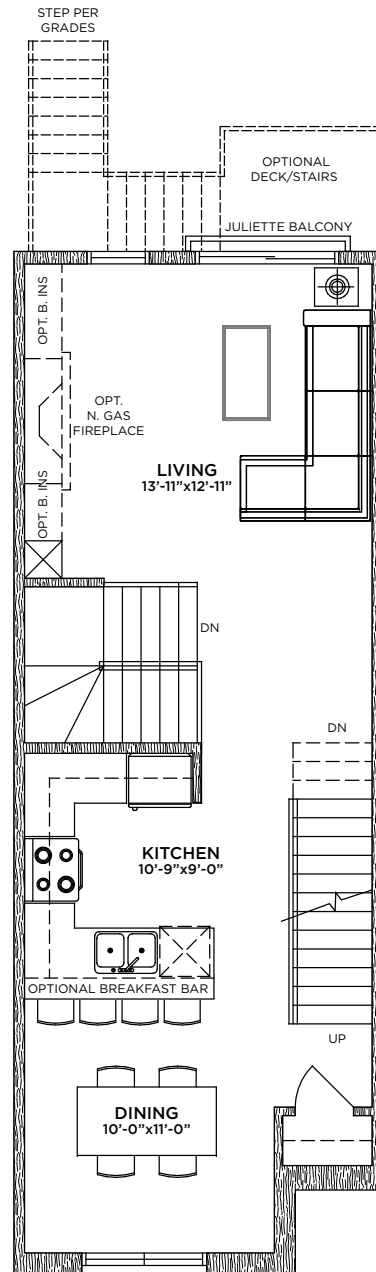
1,555 sq.ft



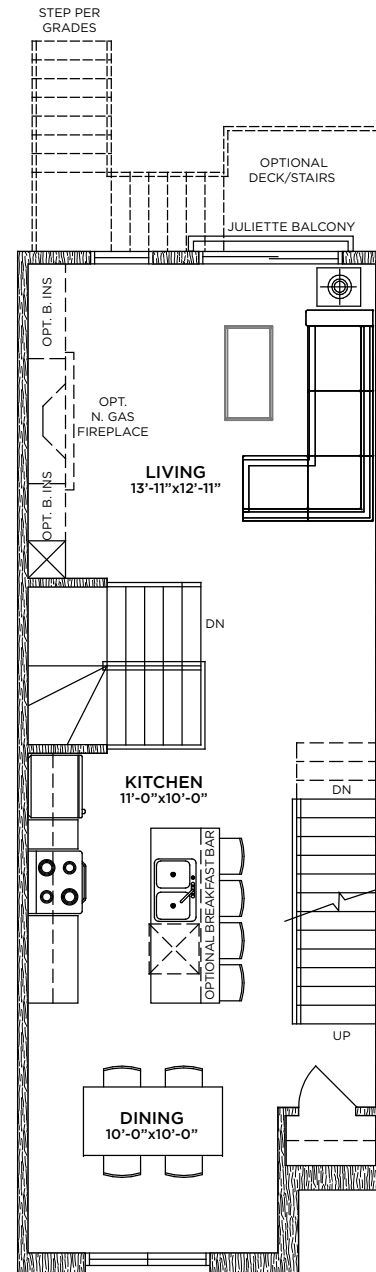
**GROUND FLOOR A**  
STANDARD



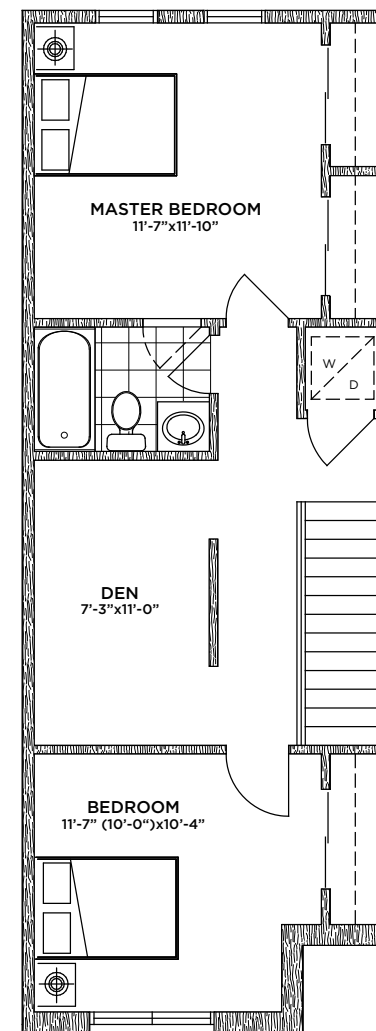
**GROUND FLOOR B**  
UPGRADE 1



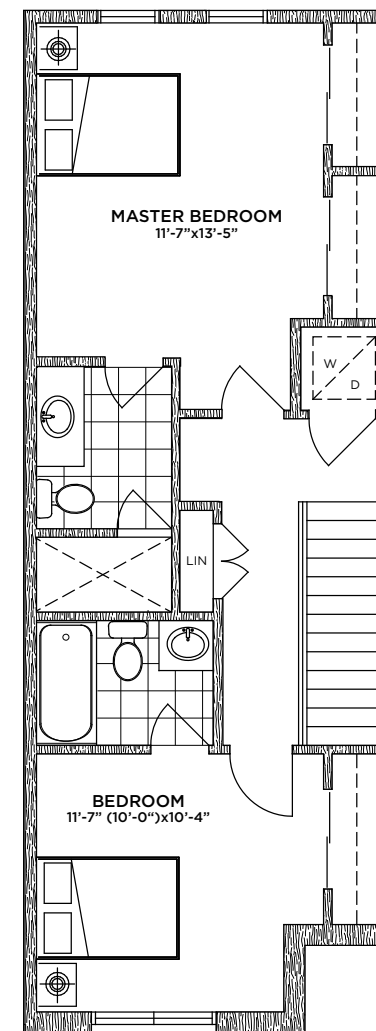
**SECOND FLOOR A**  
STANDARD



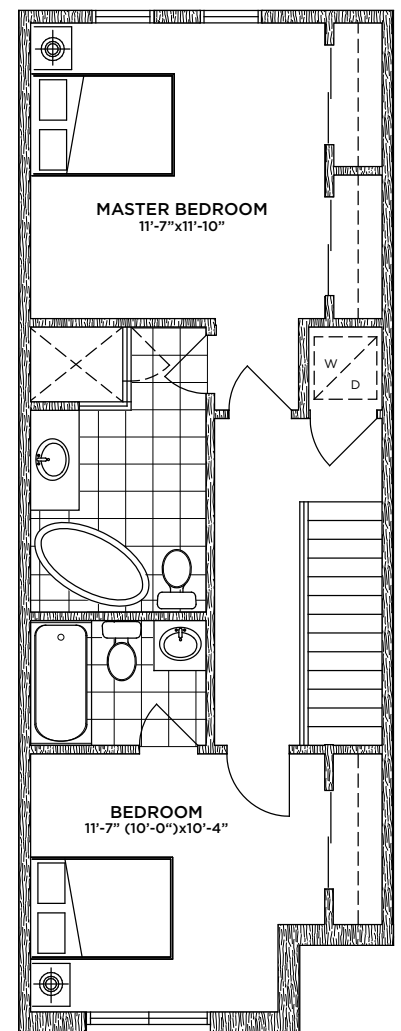
**SECOND FLOOR B**  
STANDARD



**THIRD FLOOR A**  
STANDARD



**OPT. THIRD FLOOR B**  
UPGRADE 1



**OPT. THIRD FLOOR C**  
UPGRADE 2

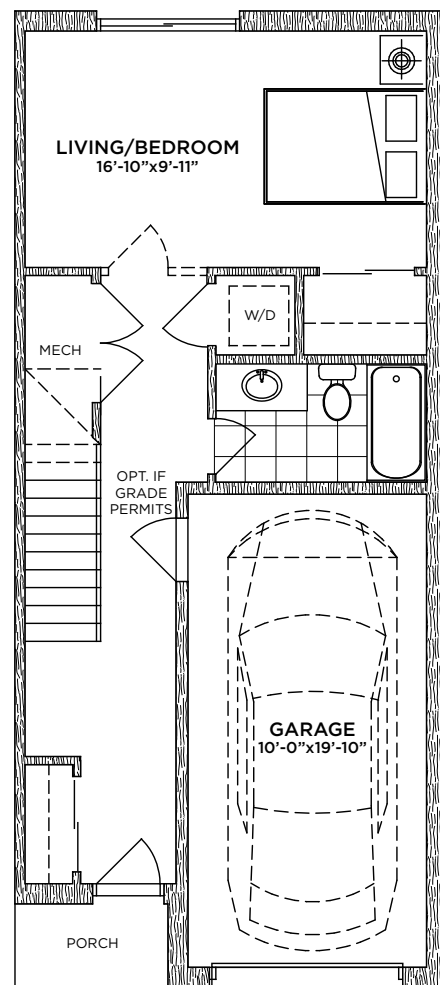
Materials, specifications, and floor plans are subject to change without notice. All renderings are artist's conceptions. All floor plans are approximate dimensions. Actual usable floor space may vary from the stated floor area. E. & O.E.

**DICENZO**  
H O M E S  
IT'S NOT REAL ESTATE, IT'S REAL LIFE.

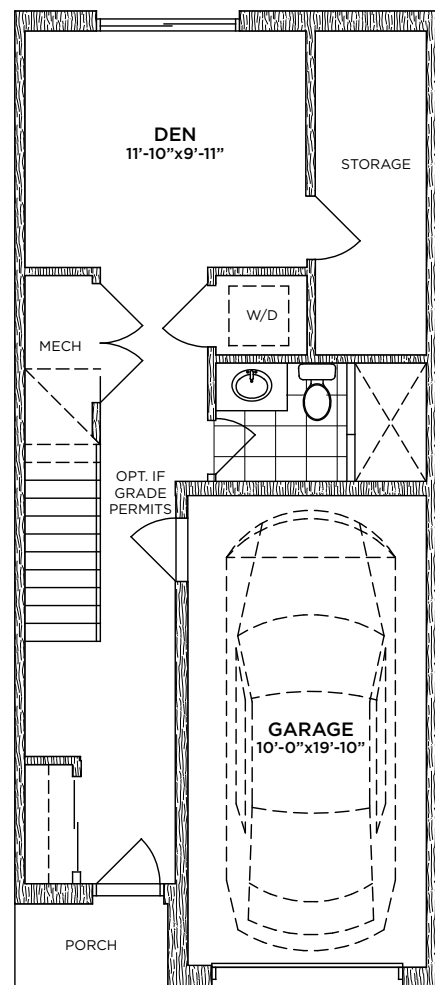
**NEXUS**  
BUILDING COMMUNITIES TOGETHER

# THE MAPLE

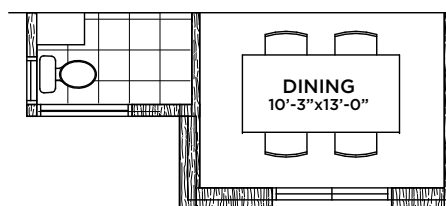
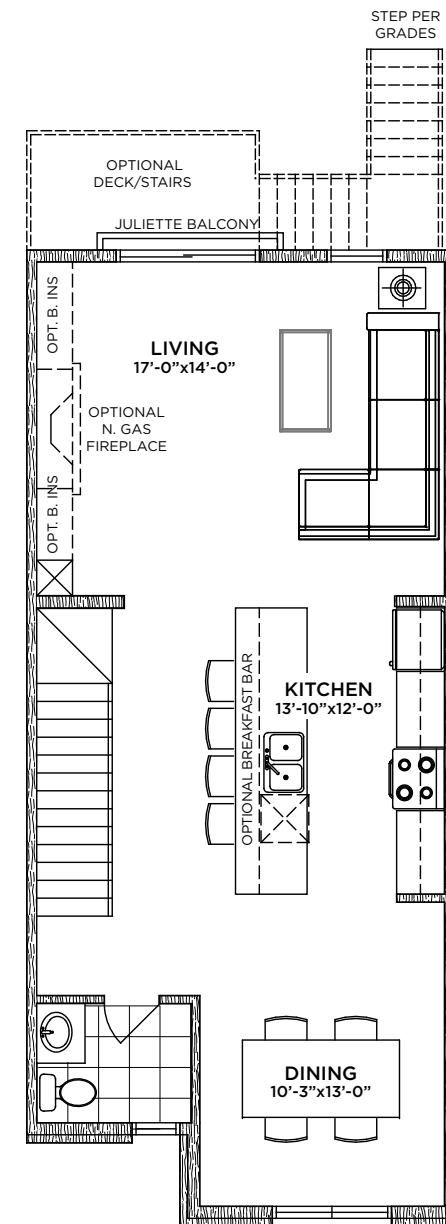
1,880 sq.ft



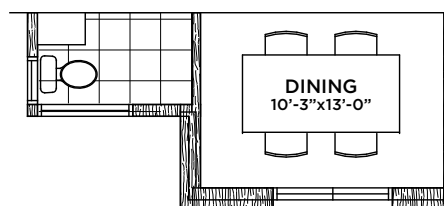
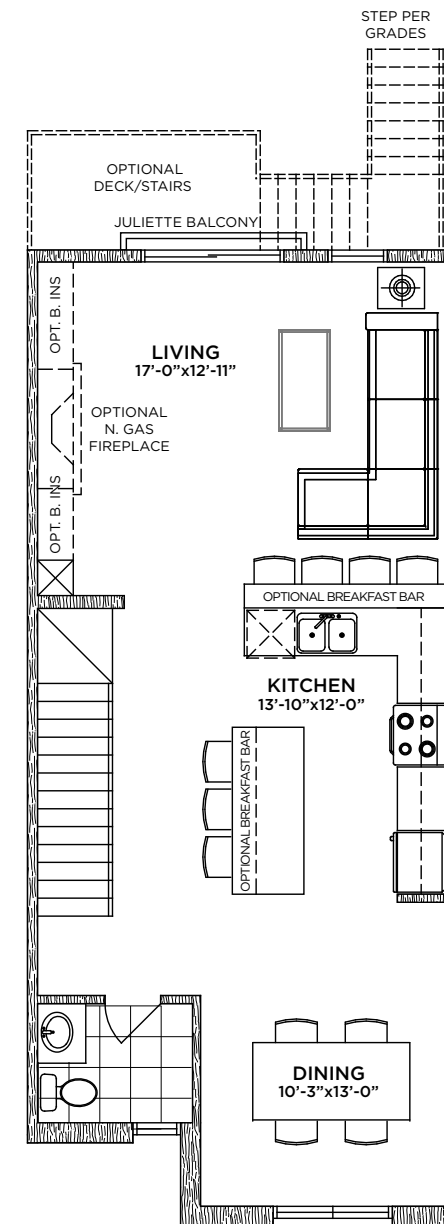
**GROUND FLOOR A**  
STANDARD



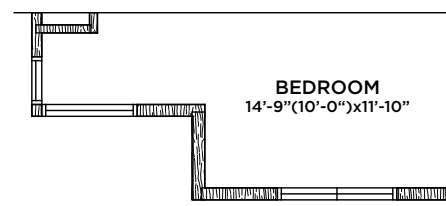
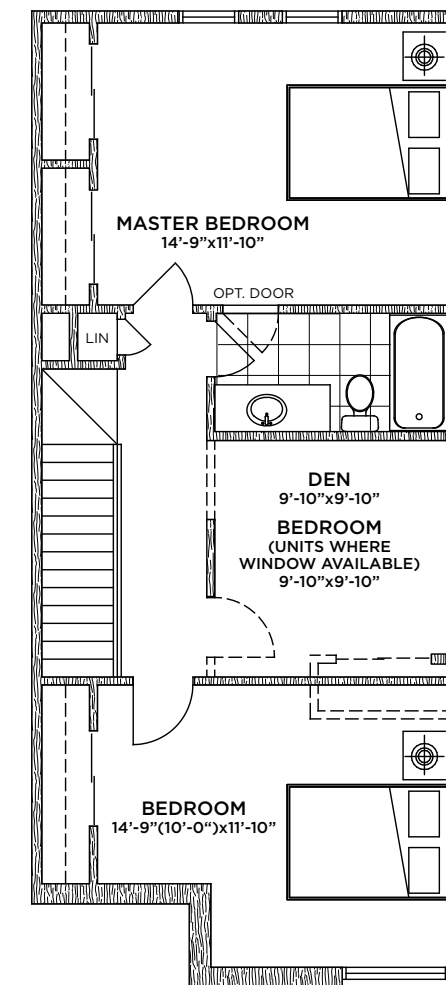
**GROUND FLOOR B**  
STANDARD



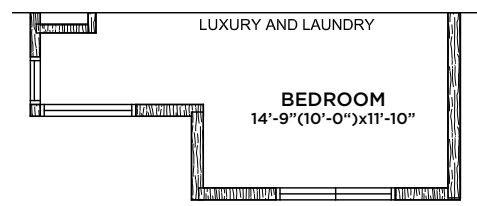
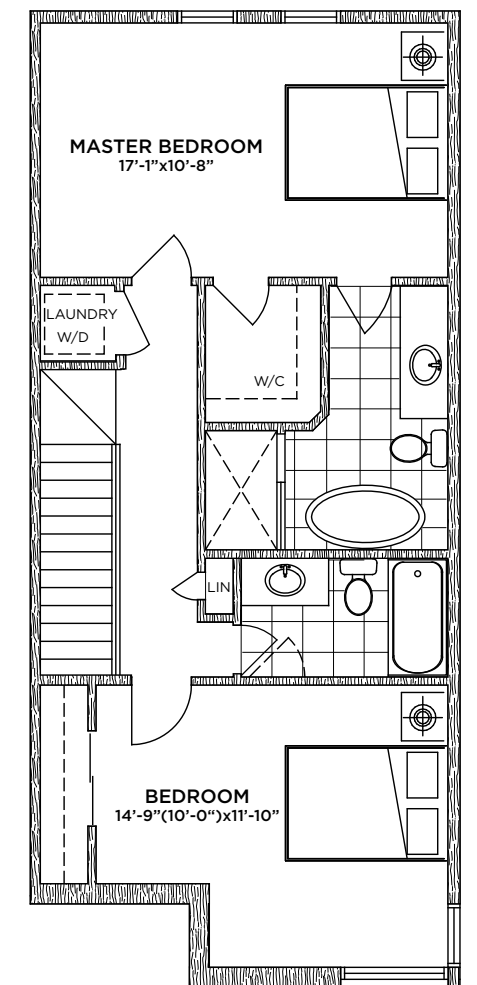
**SECOND FLOOR A**  
STANDARD



**SECOND FLOOR B**  
STANDARD



**THIRD FLOOR A**  
STANDARD



**THIRD FLOOR B**  
UPGRADE 1

Materials, specifications, and floor plans are subject to change without notice. All renderings are artist's conceptions. All floor plans are approximate dimensions. Actual usable floor space may vary from the stated floor area. E. & O.E.

**DICENZO**  
H O M E S  
IT'S NOT REAL ESTATE, IT'S REAL LIFE.

**NEXUS**  
BUILDING COMMUNITIES TOGETHER

Waterstone

# LUXURY FEATURES AND FINISHES

Open concept designs provide vibrant spaces with main floors featuring elegant 9' ceilings. Spacious kitchen designs, complete with island and breakfast bar options, offer exceptional functionality for both entertaining and day-to-day living. Contemporary designer cabinetry choices, double compartment stainless steel sinks with single lever polished chrome faucets, and a variety of quality flooring options make these kitchens as functional as they are beautiful.

Our Plans are designed to suit every lifestyle need. Convenient 2nd floor laundry, Juliette balconies, walk out deck options, and options for 3 Bedroom plans with 3 baths. These Homes have it all.

Large windows allow for light-filled living spaces within the home while sliding patio doors provide easy access to rear yards, perfect for family use as well as entertaining. All homes feature maintenance-free vinyl thermopane casement windows, maintenance-free garage doors with decorative windows and metal insulated front entry doors with polished nickel grip sets. Interiors include modern 2-panel interior doors with polished nickel hardware, quality ceramic and porcelain tile, vinyl plank flooring and broadloom as per plans.

For your family's comfort, all homes are fitted with a high efficiency forced air furnace. Hot water heater and HRV rental units are power vented to the exterior.

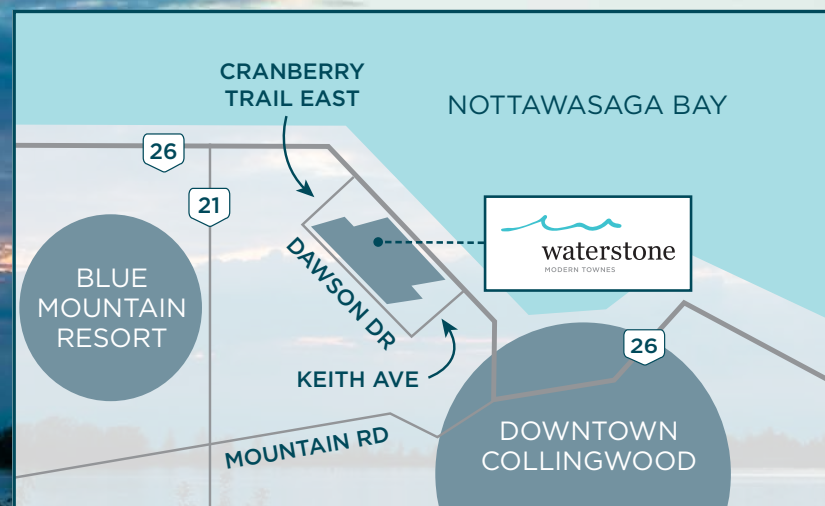




# IT'S NOT REAL ESTATE IT'S REAL LIFE

Of course a home is an investment, but the most important returns come in birthdays and family dinners, first steps and graduation celebrations, and long Sunday afternoons. Your home is where real life happens. In 1952 DiCenzo Home's founder, Tony DiCenzo, built his first home for his own family. He then applied his tireless work ethic and craftsman's skill to turning his company into one of the largest landowners and developers in southern Ontario.

Today his son Anthony is President. He handpicks his trades people and immerses himself in every project, from community planning and building design to framing and finishing. You'll inevitably find every architectural drawing marked up with his signature purple pen, and often his hand sketches will be exactly translated into the formal drawings used to create a community or home. At DiCenzo Homes, it's not just real estate, it's a real life passion. Because we believe that whatever you put into a home, it should give back even more.



[WaterstoneTownes.com](https://WaterstoneTownes.com)

**DICENZO**  
H O M E S  
IT'S NOT REAL ESTATE, IT'S REAL LIFE.

**NEXUS**  
BUILDING COMMUNITIES TOGETHER