

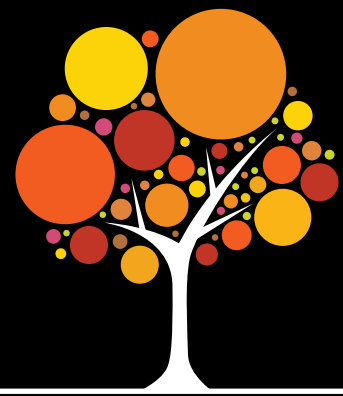
A stylized tree silhouette in dark grey against a black background. The tree's canopy is composed of numerous overlapping circles of varying sizes. A large, prominent circle in the upper right portion of the canopy is filled with a gradient from yellow to orange to red. Inside this large circle, the text "Do You Believe In Magic?" is written in white, sans-serif font, arranged in three lines.

Do You  
Believe In  
Magic?

# Do You Believe In Magic?

## CLOSE YOUR EYES AND IMAGINE ...

... your ideal place to live. In a newly crafted, elegantly designed home ... where you can enjoy a complete lifestyle the minute you move in ... where all of life's necessities and amenities are within a short walk or drive ... in a well-established neighbourhood that is the definition of prestige in Hamilton ...



STONEGATE  
park



... Now, open your eyes and discover Stonegate Park.  
It's no trick.

## WHERE PRESTIGE AND AFFORDABILITY MEET



This is the neighbourhood you've been looking for in Hamilton. Offering all the qualities today's new homebuyers want - a beautifully designed, carefully built new home in a prime neighbourhood at an affordable price. That is the magic and the reality of Stonegate Park.

## CLOSE TO EVERYTHING, INCLUDING PERFECTION

● ● ● Seeing is believing. Well established, family friendly, and conveniently located, Stonegate Park is a neighbourhood that brims with options.

You can start out and grow your life here, or downsize to a simpler, more convenient lifestyle where you'll entertain friends and family to create new memories for years to come.

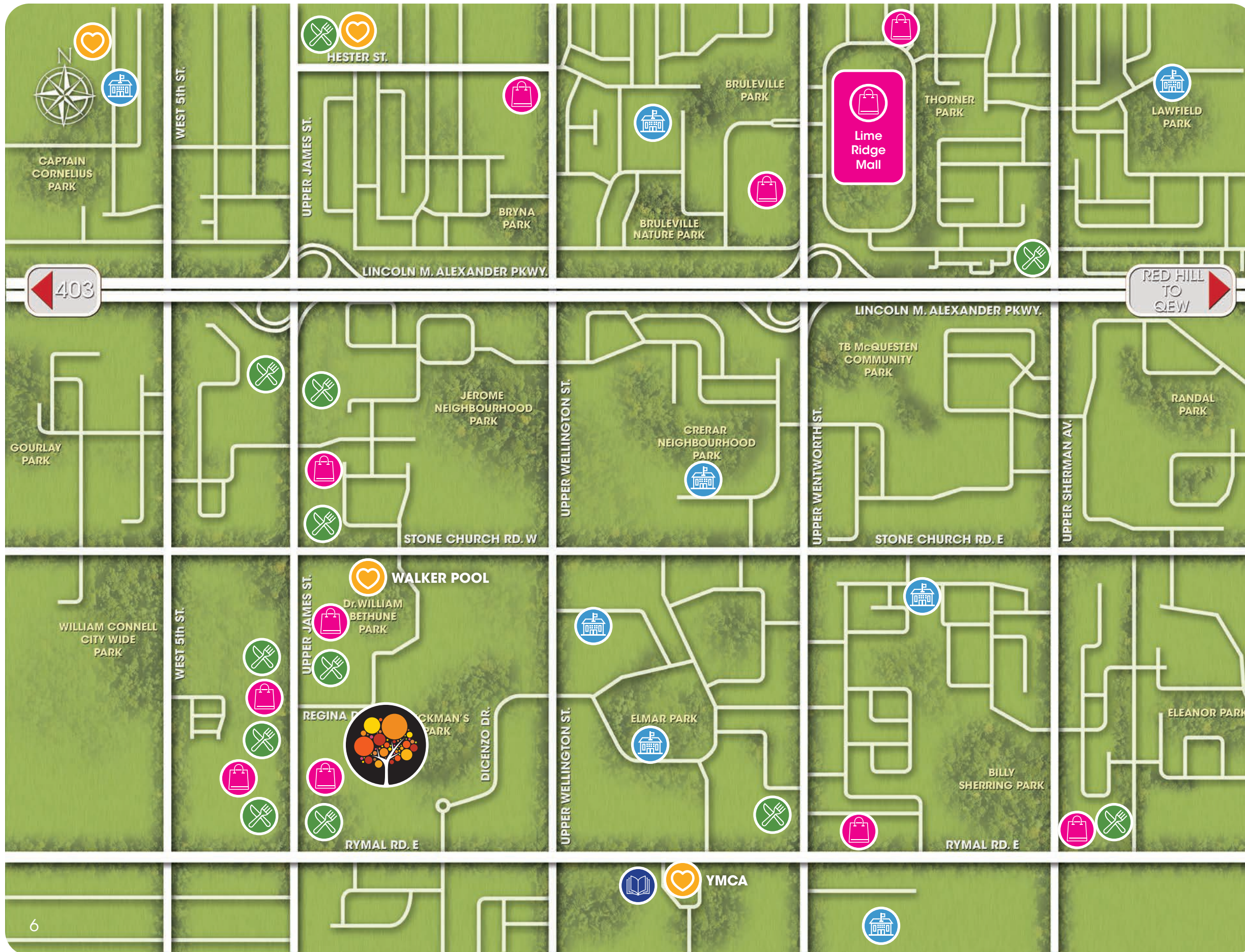


## ENCHANTING AMENITIES ALREADY IN PLACE, LIKE MAGIC!

● ● ● In addition to being dazzled by the elegance and affordability of Stonegate Park, you'll love the convenience of it, too.

Stonegate Park offers much more than a selection of refined yet affordable semi-detached homes and townhouses. It provides the unique opportunity to move into a prestigious neighbourhood with an abundance of conveniences and amenities for your family.

Everything you want is here for you to enjoy the moment you move in to your new home.



## AMENITIES ● ● ●

Located near Upper Wellington Street and Stone Church Road East in Hamilton, Stonegate Park is a short drive away from street front and mall shopping - including Lime Ridge Mall - as well as grocery stores, restaurants, drug stores, and coffee shops. Stonegate Park's central location also provides quick access to Mohawk College and McMaster University, as well as the 403 and the Lincoln Alexander Parkway.

-  **SHOPPING**
-  **RESTAURANTS**
-  **COMMUNITY CENTRES**
-  **LIBRARY**
-  **SCHOOLS**

# EXQUISITE DESIGN, IMPECCABLE LIVING ENVIRONMENTS



Stonegate Park offers you the convenience of a neighbourhood that suits your needs. If you are starting your life, growing your family or downsizing to something simpler the right home is here for you. The homes of Stonegate Park epitomize elegance. Exteriors are sure to impress with their stone and brick facades in both classic and modern expressions.

Open concept interiors offer plenty of space for family living, casual gatherings and special occasions. Finishes and features are thoughtfully chosen to reflect the way we live today with optional packages available to reflect your personal style.

Whether you are looking for a townhome or semi detached, Stonegate Park offers a range of choice. All of the floor plans include intelligent and thoughtfully designed layouts, with livable space filled with warm, natural light. Quality finishes and contemporary elements that honour timeless craftsmanship, making it easy to enjoy the comforts and conveniences of a connected lifestyle.

The stunning features and finishes found at Stonegate Park are genuine, contemporary, strikingly stylish and sure to offer the perfect complement to your impeccable taste. The choice is yours!



# SEMI-DETACHED HOMES



The Semis at Stonegate Park are built with pride and to the exacting standards of design and construction that inspire every home we create.

With a variety of floor plans and features to choose from, including open concept kitchens and living spaces, large ensuites, and His & Hers walk-in closets, you can be sure to find the home that suits your lifestyle.



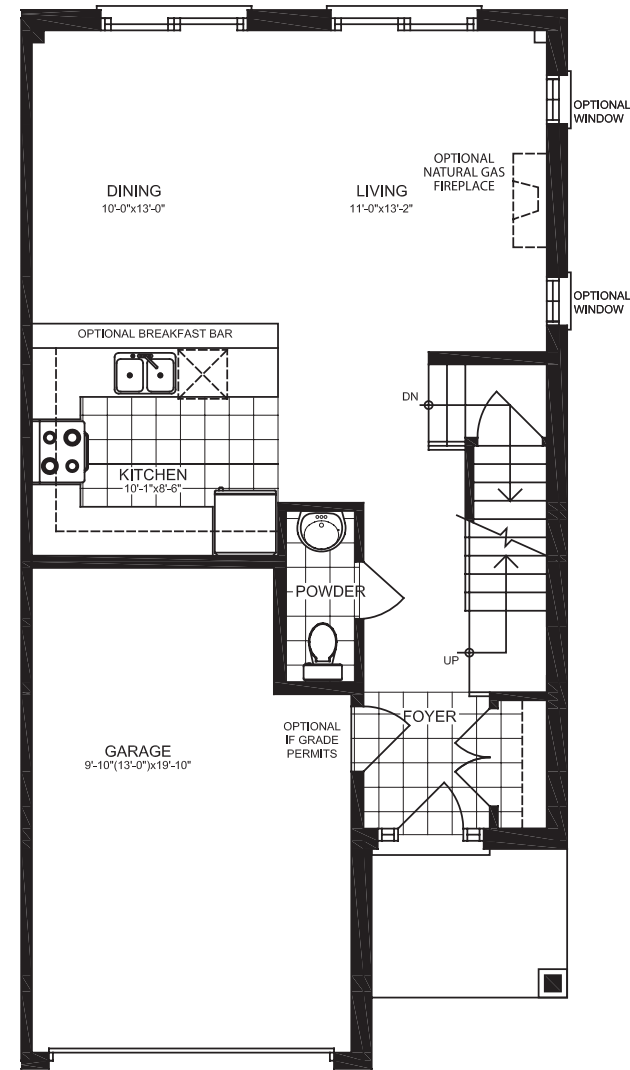
# THE DOLCE

1,450 SQ FT

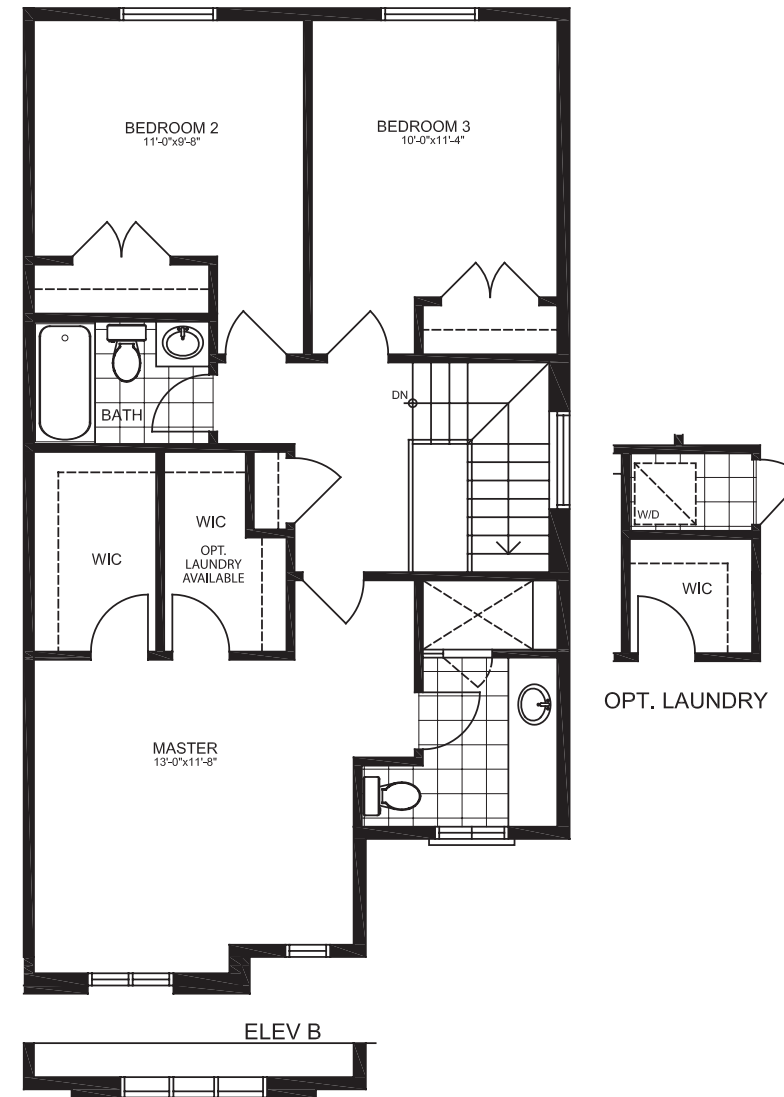


The Dolce features a traditional kitchen maximized for storage. Enjoy your new oversized garage, large master suite and generous His & Hers walk-in closets.

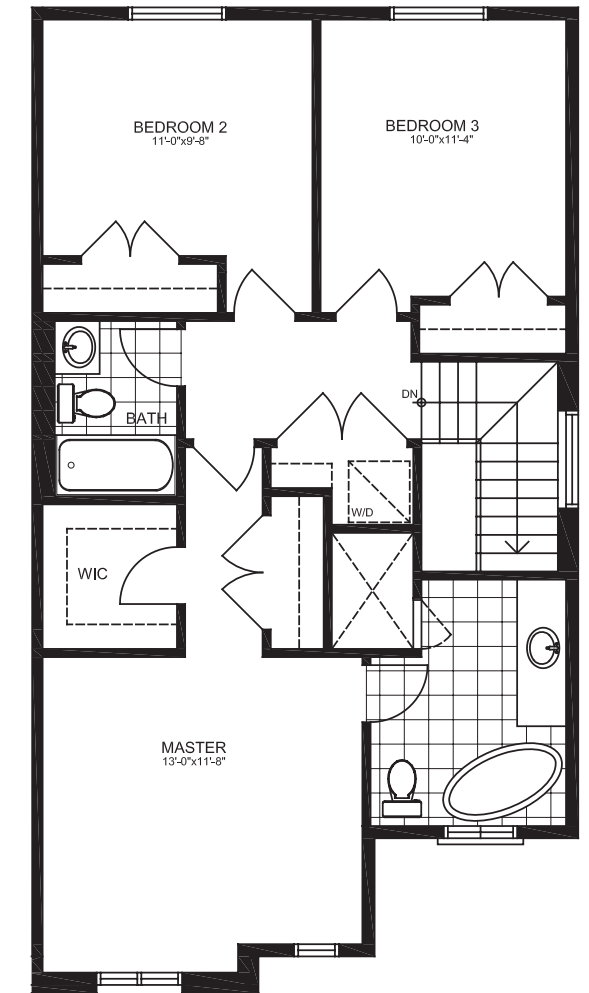
Upgrade the second floor to include a luxury ensuite with a freestanding tub or a laundry closet with additional storage!



**GROUND FLOOR**



**SECOND FLOOR**



**SECOND FLOOR  
PREMIUM OPTION**  
*Luxury Ensuite & 2nd Floor Laundry*

Floorplans, materials and specifications are subject to change without notice. All dimensions and square footage are approximate. Actual usable floor space may vary from stated floor area. Models may be built as mirror image. Optional floorplan premiums apply.



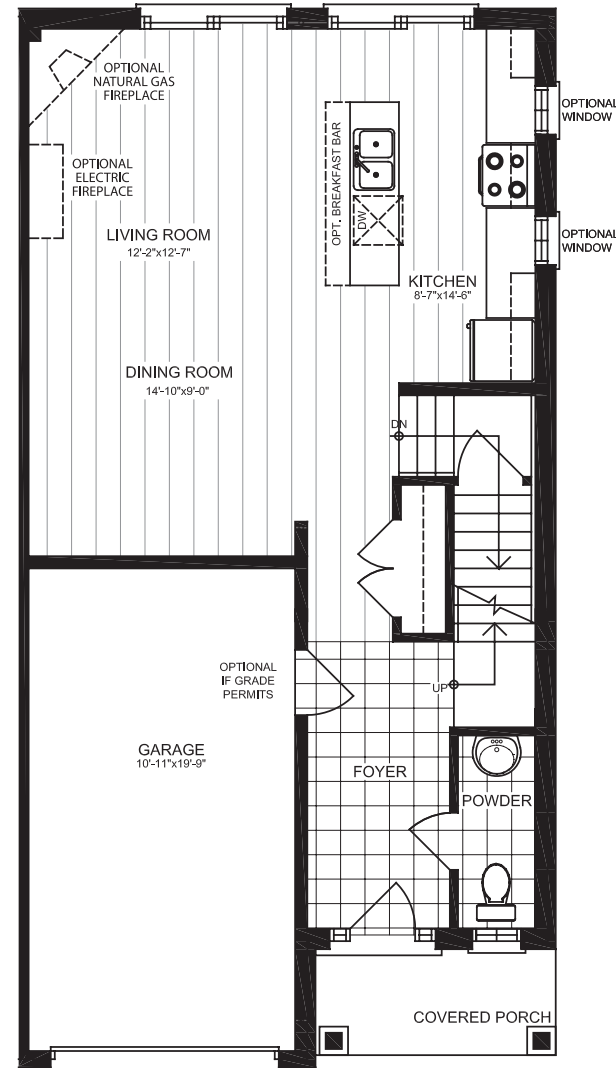
# THE SAVONA

1,560 SQ FT

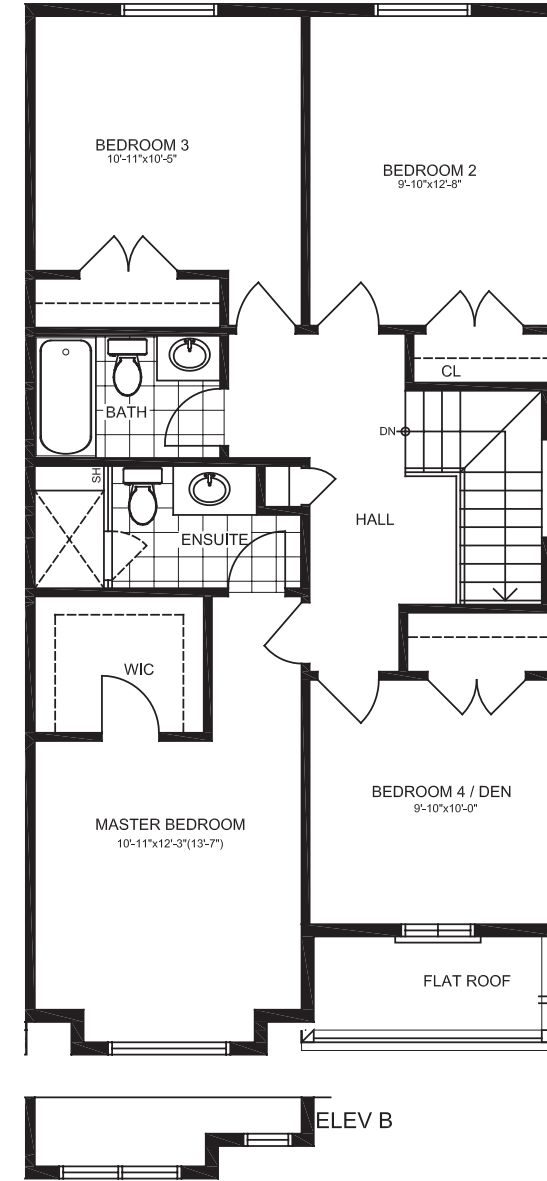


The Savona model features hardwood flooring with colour co-ordinated stained oak stairs and 4 bedrooms. The open concept kitchen and living area are perfect for entertaining with an oversized island and an optional breakfast bar.

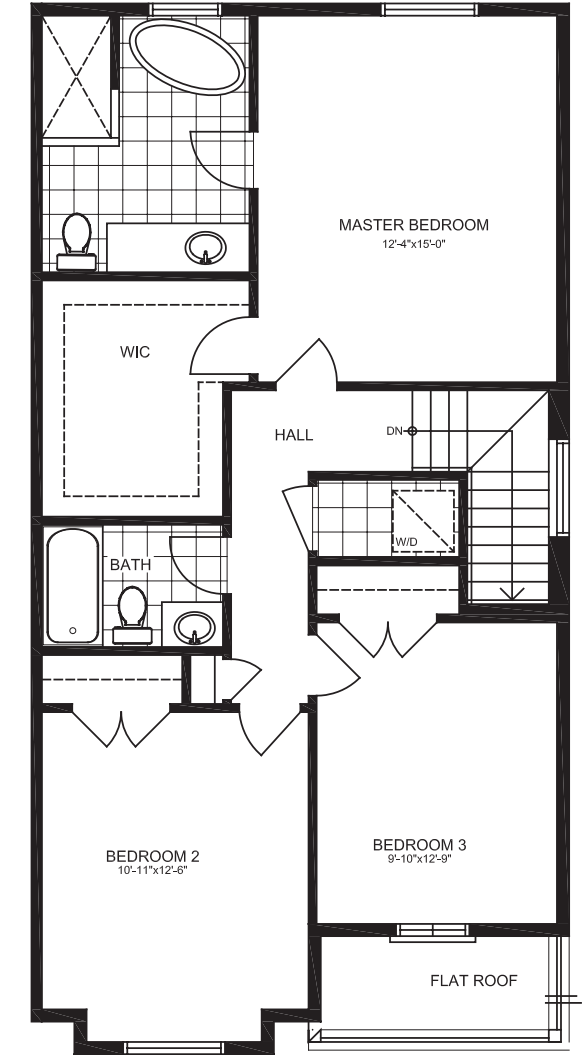
Upgrade the second floor to the 3 bedroom layout for a rear master with oversized walk-in closet, luxury ensuite with freestanding tub and second floor laundry.



**GROUND FLOOR**



**SECOND FLOOR**



**SECOND FLOOR**  
**PREMIUM OPTION**  
*Luxury Ensuite & 2nd Floor Laundry*

Floorplans, materials and specifications are subject to change without notice. All dimensions and square footage are approximate. Actual usable floor space may vary from stated floor area. Models may be built as mirror image. Optional floorplan premiums apply.

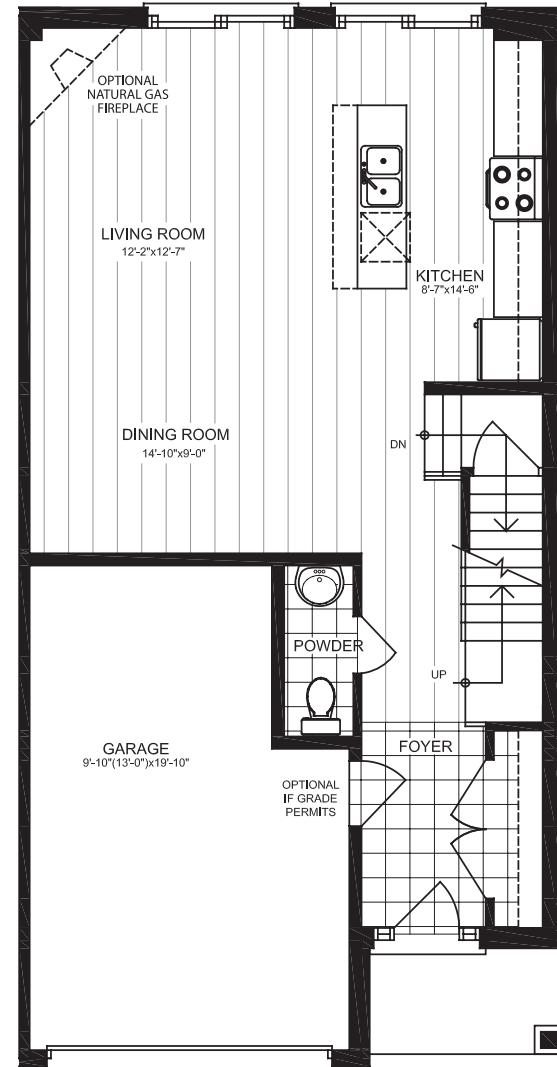
# THE IMPERIA

1,575 SQ FT

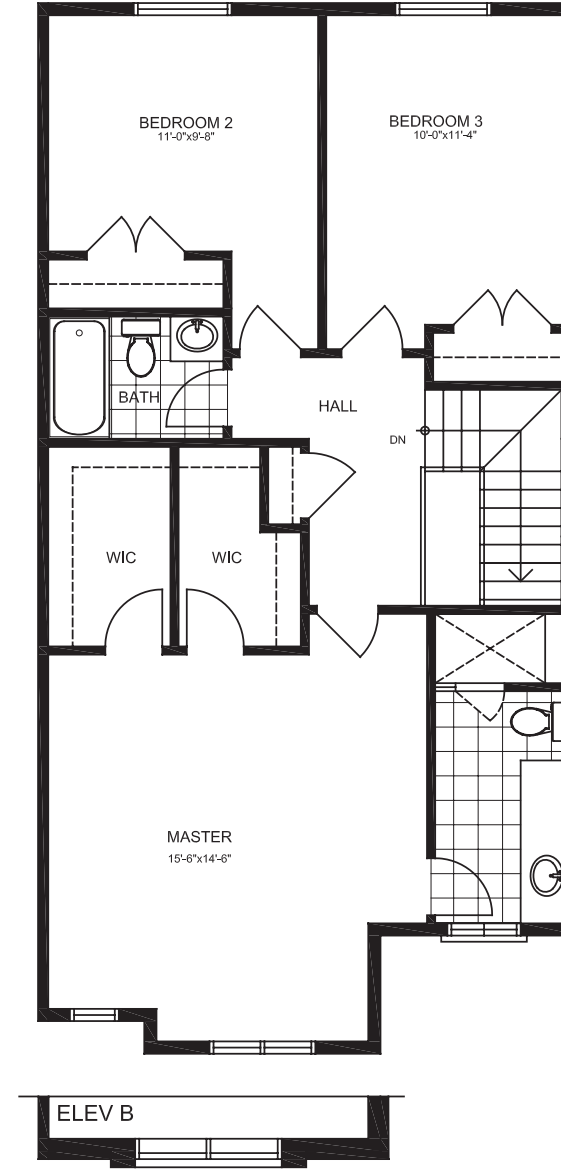


The Imperia features beautiful hardwood flooring with colour co-ordinated stained oak stairs, an oversized master bedroom with standard oversized His & Hers walk-in closets and a large ensuite.

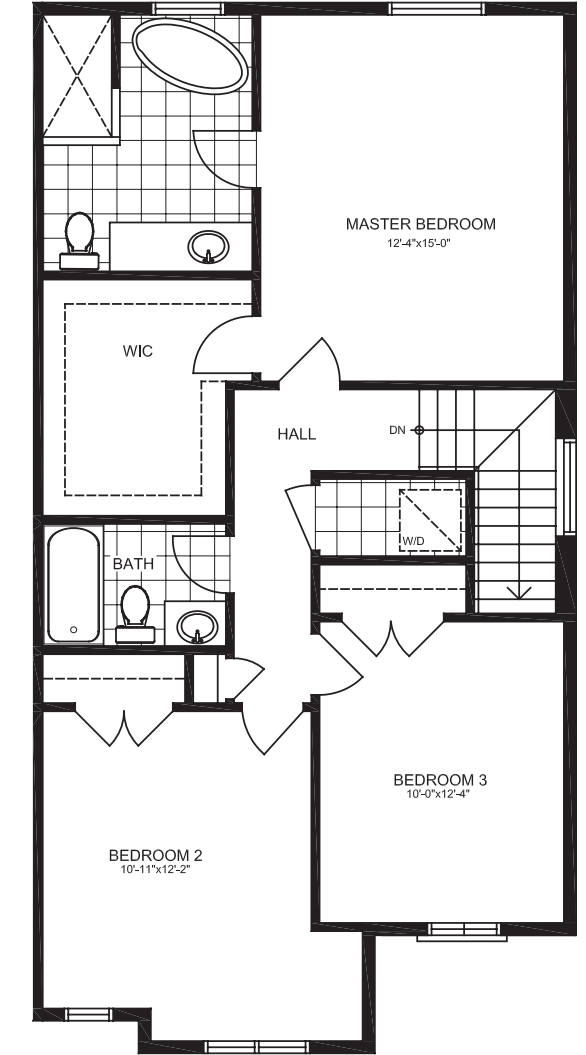
Upgrade the second floor of this model to include a luxury ensuite with a freestanding tub and second floor laundry.



**GROUND FLOOR**



**SECOND FLOOR**



**SECOND FLOOR  
PREMIUM OPTION**  
*Luxury Ensuite & 2nd Floor Laundry*

Floorplans, materials and specifications are subject to change without notice. All dimensions and square footage are approximate. Actual usable floor space may vary from stated floor area. Models may be built as mirror image. Optional floorplan premiums apply.

# TOWN HOMES



Stonegate's release of townhomes includes spacious, intelligently designed living environments that allow you to choose the combination of ground floor and second floor plans that work best for you.



# THE CHOICE IS YOURS!



Rendering is Artist's Concept and is an artistic interpretation of the design. It is not meant to be an exact rendition. Some items may not be standard and/or represent an exact material or design. Rendering displays finishes on enhanced end unit. Not applicable to all end units. Exact grading may differ.

# FLOOR PLAN OPTIONS

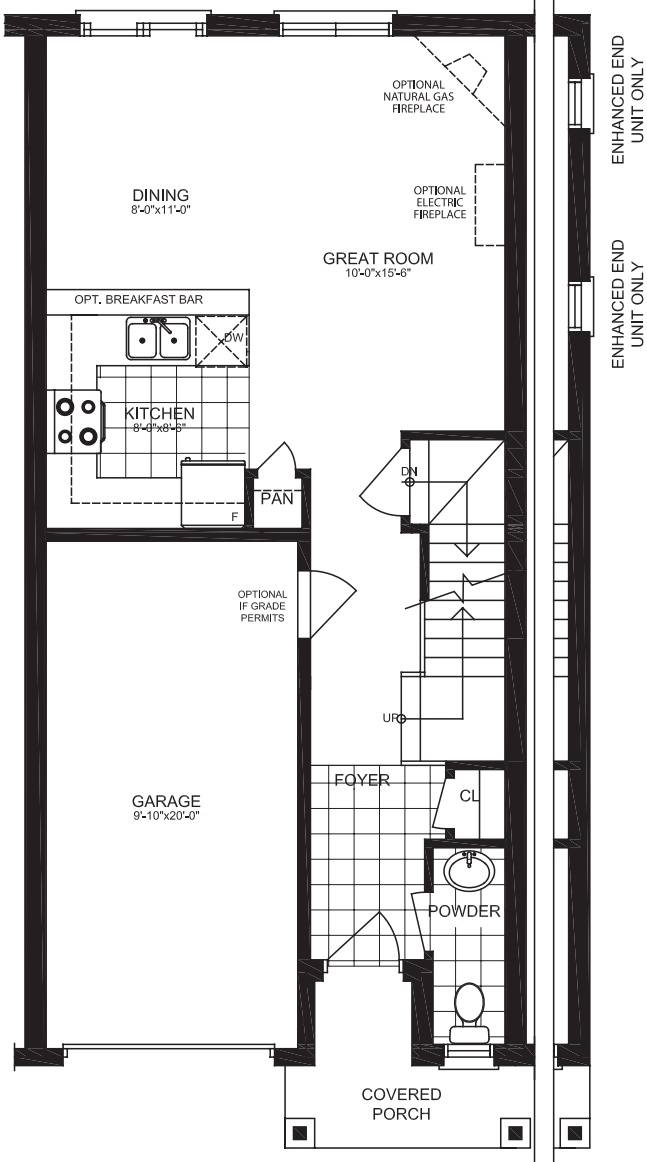
On the main floor you can customize your home by selecting the kitchen layout that suits your lifestyle. Or upgrade to our premium ground floor option with an open concept layout, featuring hardwood flooring throughout the living areas and stained oak staircase.

The second floor plan includes a spacious master bedroom with a walk-in closet and a 3-piece ensuite with a glass enclosed shower, two generously sized bedrooms and a 3-piece main bathroom.

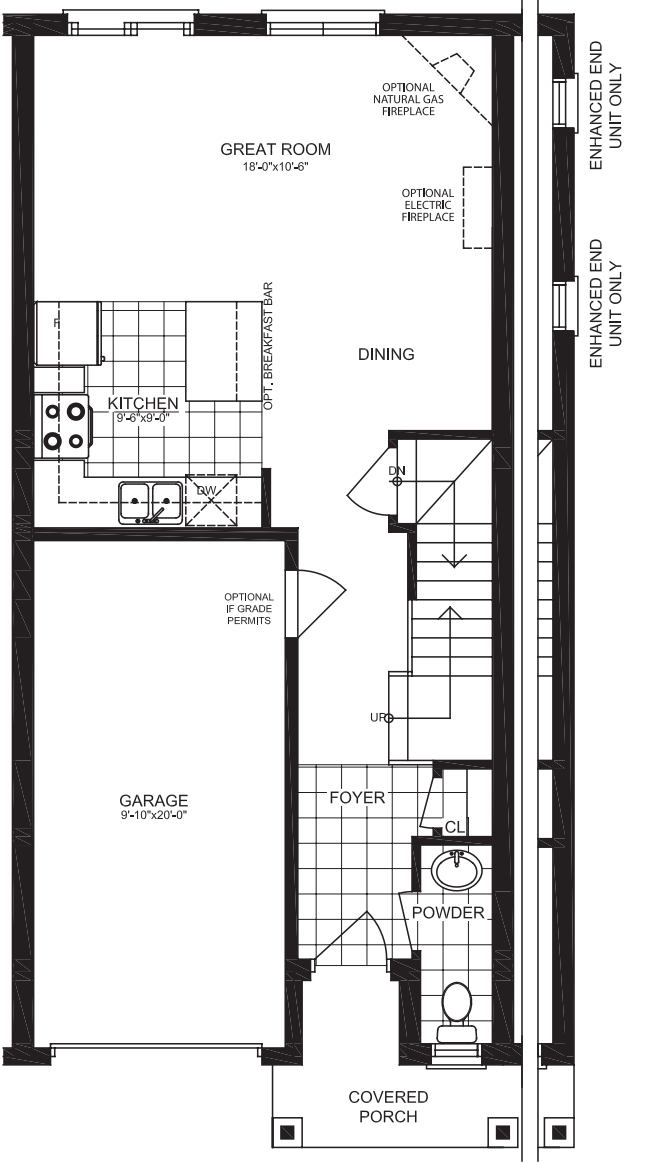
Optional premium floorplans include choices of a 4-piece master ensuite, 2nd floor laundry, or a 2 bedroom and den combination with an oversized master bedroom with a 4-piece ensuite.

Townhome units are 1,310 sq. ft.

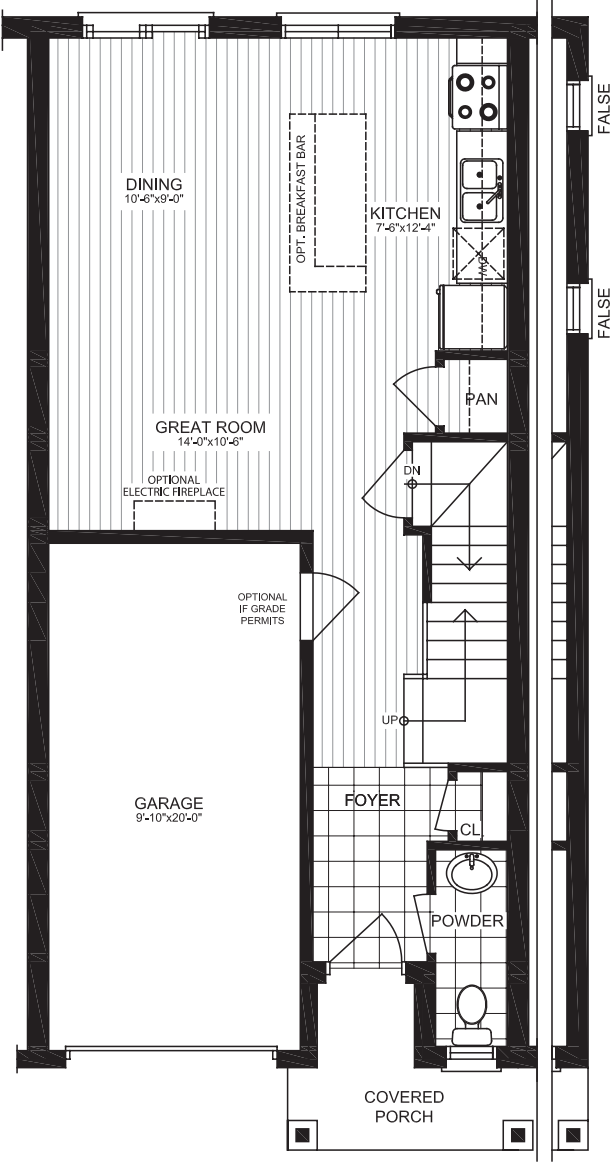
# MAIN FLOOR OPTIONS



**GROUND FLOOR 1A**



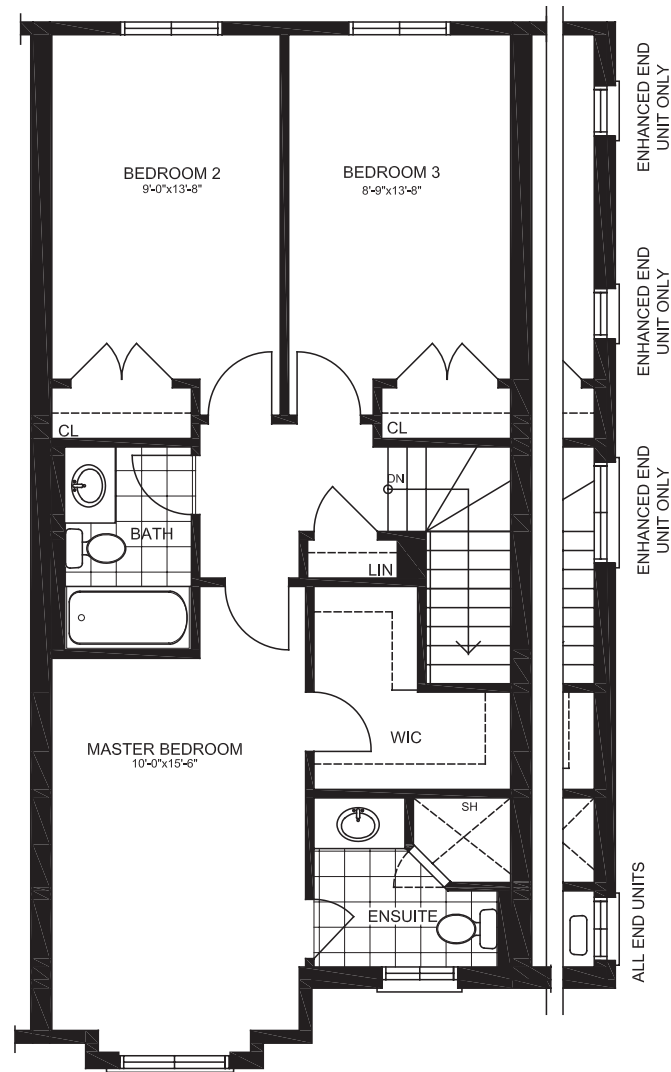
**GROUND FLOOR 1B**



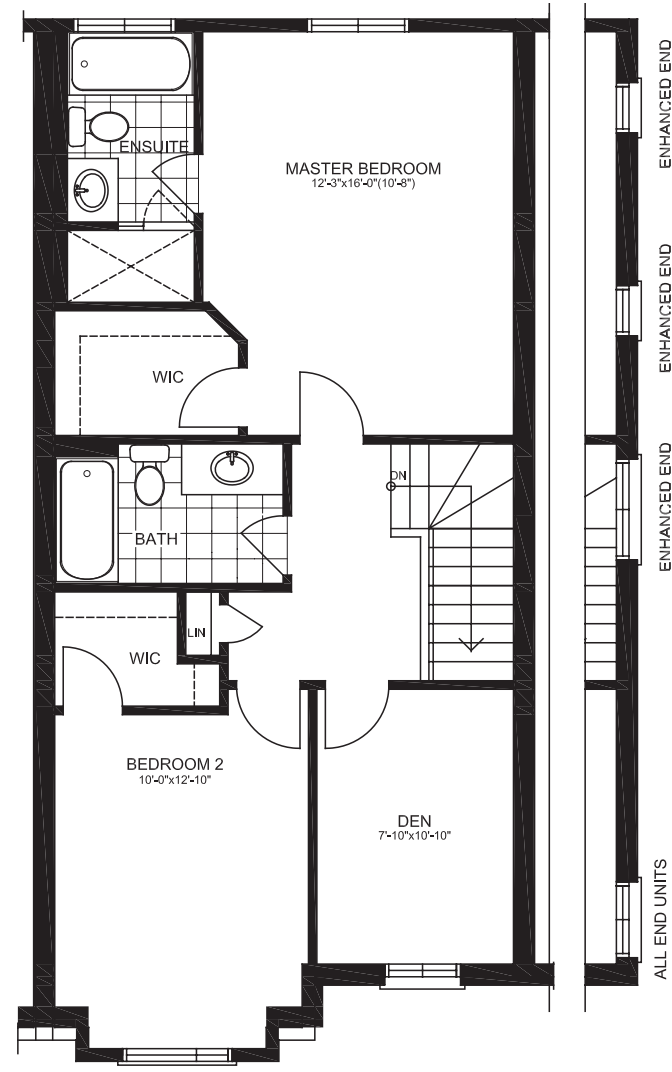
**GROUND FLOOR 1C  
PREMIUM OPTION**

Floorplans, materials and specifications are subject to change without notice. All dimensions and square footage are approximate. Actual usable floor space may vary from stated floor area. Models may be built as mirror image. Optional floorplan premiums apply.

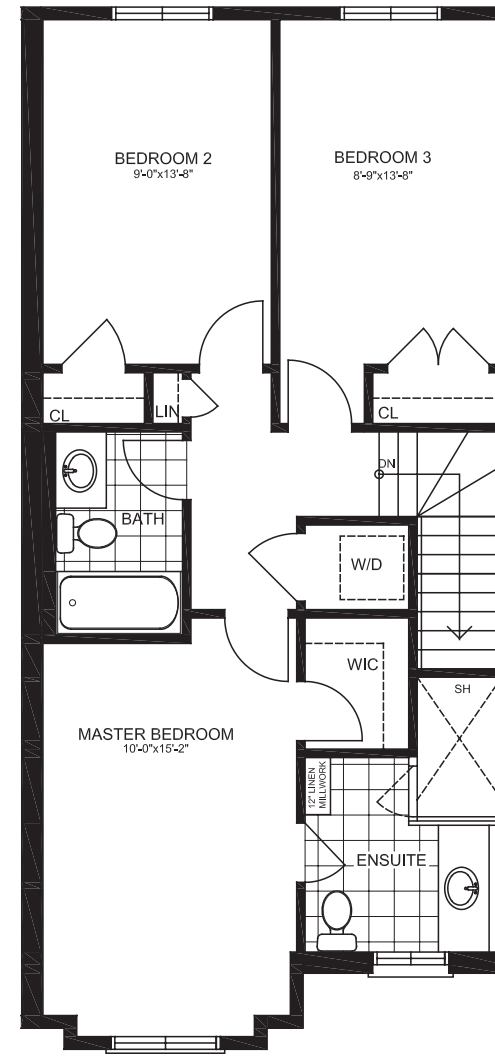
# SECOND FLOOR OPTIONS



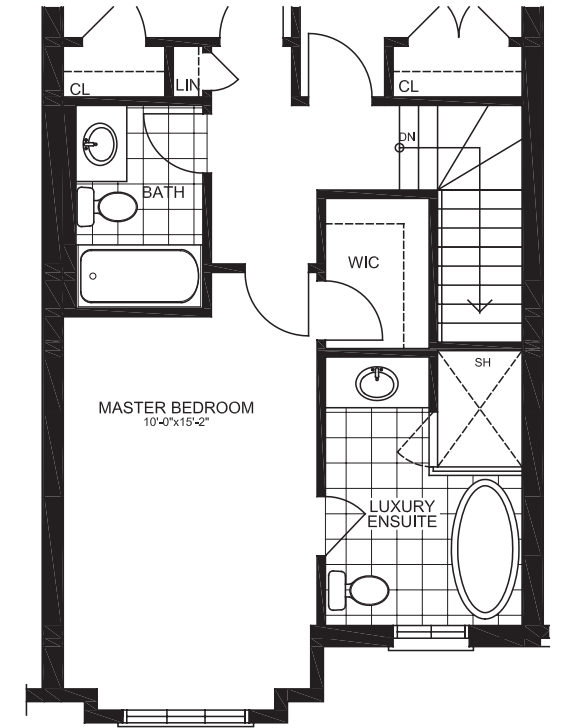
**SECOND FLOOR 2A**



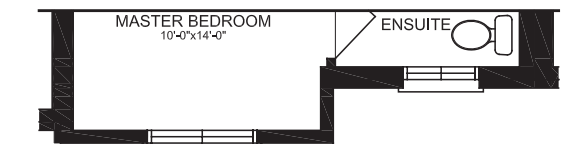
**SECOND FLOOR 2B  
PREMIUM OPTION**



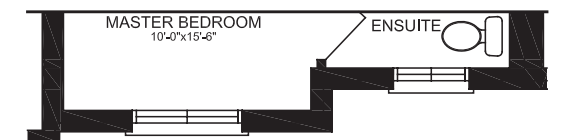
**SECOND FLOOR 2C  
PREMIUM OPTION**



**SECOND FLOOR 2D  
PREMIUM OPTION**



**'B' ELEVATION  
1300 SF**



**'C' ELEVATION  
1295 SF**



## IT'S NOT REAL ESTATE. IT'S REAL LIFE.

Of course, a home is an investment, but the most important returns come in birthdays, family dinners, graduations and long Sunday afternoons. Your home is where real life happens.



In 1952 DiCenzo Home's founder, Tony DiCenzo, built his first home for his own family. He then applied his tireless work ethic and craftsman's skill to turning his company into one of the largest landowners and developers in southern Ontario.

Today his son Anthony is President. He handpicks his trades people and immerses himself in every project, from community planning and building design to framing and finishing. You'll inevitably find

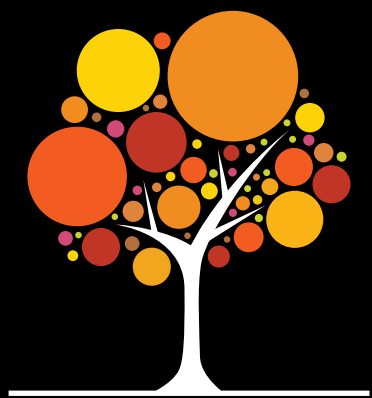
every architectural drawing marked up with his signature purple pen and often his hand sketches will be exactly translated into the formal drawings used to create a community or home.

At DiCenzo Homes, it's not just real estate, it's a real life passion. Because we believe that whatever you put into a home, it should give back even more.



# Just Like Magic ...

## ... IT'S WHAT YOU'VE BEEN LOOKING FOR.



# STONEGATE park

DiCenzoHomes.ca

